

REVIEW

Open Access



The IS6 family, a clinically important group of insertion sequences including IS26

Alessandro Varani¹ , Susu He², Patricia Siguier³, Karen Ross⁴ and Michael Chandler^{5*}

Abstract

The IS6 family of bacterial and archaeal insertion sequences, first identified in the early 1980s, has proved to be instrumental in the rearrangement and spread of multiple antibiotic resistance. Two IS, IS26 (found in many enterobacterial clinical isolates as components of both chromosome and plasmids) and IS257 (identified in the plasmids and chromosomes of gram-positive bacteria), have received particular attention for their clinical impact. Although few biochemical data are available concerning the transposition mechanism of these elements, genetic studies have provided some interesting observations suggesting that members of the family might transpose using an unexpected mechanism. In this review, we present an overview of the family, the distribution and phylogenetic relationships of its members, their impact on their host genomes and analyse available data concerning the particular transposition pathways they may use. We also provide a mechanistic model that explains the recent observations on one of the IS6 family transposition pathways: targeted cointegrate formation between replicons.

Keywords: Insertion sequence, Phylogeny, Genome impact, Transposition mechanisms, Clinical importance, Antibiotic resistance

Introduction

The importance of insertion sequences (IS) in shaping prokaryotic genomes and in directing gene sequestration as a prologue to horizontal transfer in bacterial populations has been well documented (see [1, 2] and references therein for a detailed discussion). IS are small DNA segments generally less than 2.5 kb long encoding an enzyme, the transposase (Tnp), which catalyzes the DNA cleavage and strand-transfer reactions enabling movement from one location (the donor site) to another (the target site) in DNA molecules. Tnp acts on its cognate IS and is generally the only gene carried by the IS. IS are a diverse group of transposable elements (TE) which often include short imperfect terminal inverted repeat sequences (IR) and generate small flanking directly repeated target DNA sequences (DR) on insertion.

There are at least 27 IS families [3, 4] defined by the chemistry used by their Tnp, the sequence relatedness of the Tnp as defined [5] by TRIBE-MCL which relies on the Markov cluster (MCL) algorithm [6] and the sequence of their ends. These families are listed in the ISfinder database (ISfinder, <https://www-is.biotoul.fr/>) and described in detail in TnPedia (https://tnpedia.fcav.unesp.br/index.php/Main_Page), a source of information on prokaryotic TE which is integrated into the transposon database, TnCentral (<https://tncentral.proteininformationresource.org/>).

Here we present an overview of one of these IS families, IS6, whose importance in generating clusters of clinically important antibiotic resistance genes is becoming increasingly clear [7] and whose members may use an unusual transposition pathway.

* Correspondence: Mc2126@georgetown.edu

⁵Department of Biochem., Mol. and Cell. Biol, Georgetown University Medical Center, Washington, DC, USA

Full list of author information is available at the end of the article

IS6 nomenclature and initial identification

There are at present (December 2020) nearly 160 IS6 family members in ISfinder (<https://www-is.biotoul.fr/>)



© The Author(s). 2021 **Open Access** This article is licensed under a Creative Commons Attribution 4.0 International License, which permits use, sharing, adaptation, distribution and reproduction in any medium or format, as long as you give appropriate credit to the original author(s) and the source, provide a link to the Creative Commons licence, and indicate if changes were made. The images or other third party material in this article are included in the article's Creative Commons licence, unless indicated otherwise in a credit line to the material. If material is not included in the article's Creative Commons licence and your intended use is not permitted by statutory regulation or exceeds the permitted use, you will need to obtain permission directly from the copyright holder. To view a copy of this licence, visit <http://creativecommons.org/licenses/by/4.0/>. The Creative Commons Public Domain Dedication waiver (<http://creativecommons.org/publicdomain/zero/1.0/>) applies to the data made available in this article, unless otherwise stated in a credit line to the data.

scripts/search-db.php) from nearly 80 bacterial and archaeal species, although this represents only a fraction of those present in the public databases. The family was named [8] after the directly repeated insertion sequences in transposon Tn6 [9] to standardize the various names that had been attributed to identical elements (e.g. IS15, IS26, IS46, IS140, IS160, IS176) [10–22] including one isolate, IS15, corresponding to an insertion of one iso-IS6 (IS15Δ) into another [11]. More recently, there has been some attempt to rename the family as the IS26 family (see [23]) because of accumulating experimental data from IS26 itself, and the importance of this IS in accumulation and transmission of multiple antibiotic resistance, although this might potentially introduce confusion in the literature. IS6 family members have a simple organization (Fig. 1) and generate 8 bp direct target repeats on insertion. This family is very homogenous with an average length of about 800 bp for the majority (between 700 and 890 bp) and highly conserved short, generally perfect, IRs (Fig. 2a). There are two examples of MITES (Miniature Inverted repeat Transposable Elements composed of both IS ends and no intervening orfs [26]; of 227 and 336 bp), 7 members between 1230 and 1460 bp and three members between 1710 and 1760 bp. One member, IS15, of 1648 bp represents and insertion of one IS into another [10, 12]. Many members are found as part of compound transposons (called pseudo-compound transposons [8] (Fig. 1) described below [23]) invariably as flanking *direct repeats* (Fig. 1), a consequence of their transposition mechanism [14, 16, 20, 21, 27–39].

Distribution and phylogenetic Transposase tree

A phylogenetic tree based on the transposase amino acid sequence of the ISfinder collection (Fig. 3) shows that

the IS6 family members fall into a number of well-defined clades. This slightly more extensive set of IS corresponds well to the results of another wide-ranging phylogenetic analysis [40]. These clades include one which groups all archaeal IS6 family members composed mainly of *Euryarchaeota* (*Halobacteria*; Fig. 3 Ai-iii). Group Aiv includes both *Euryarchaeota* (*Thermococcales* and *Methanococcales*) and *Crenarchaeota* (*Sulfolobales*). Of the nine clades containing bacterial IS: clade b includes some Actinobacteria, Alpha-, Beta-, and *Gamma-proteobacteria*; clade c is more homogenous and is composed of *Alphaproteobacteria* (*Rhizobiaceae* and *Methylobacteriaceae*); clade d includes examples from the Alpha-, Beta-, and *Gamma-proteobacteria*, *Firmicutes*, *Cyanobacteria*, *Acidobacteriia* and Bacteroidetes; clades e and f are composed exclusively of Firmicutes (almost exclusively *Lactococci* in the case of clade e); clades g and h are more mixed and clade I contains only three examples. As might be expected, transposase length is approximately correlated with the clades. For example, family members from the archaea tend to be slightly smaller, in the range of 700–750 for clades Ai and Aii while members of clades h and i all carry the longest transposase genes (1230 to 1460 bp and 1710 to 1760 bp respectively). The division into clades is also underlined to some extent by the IR sequences where the sequence motifs are more pronounced when each clade is considered separately (Fig. S1) (see “Organization” below).

Clearly, the ISfinder collection does not necessarily accurately reflect the IS6 family distribution and these groupings should be interpreted with care. For example, although many are not included in the ISfinder database, IS6 family elements are abundant in archaea and cover almost all of the traditionally recognized archaeal

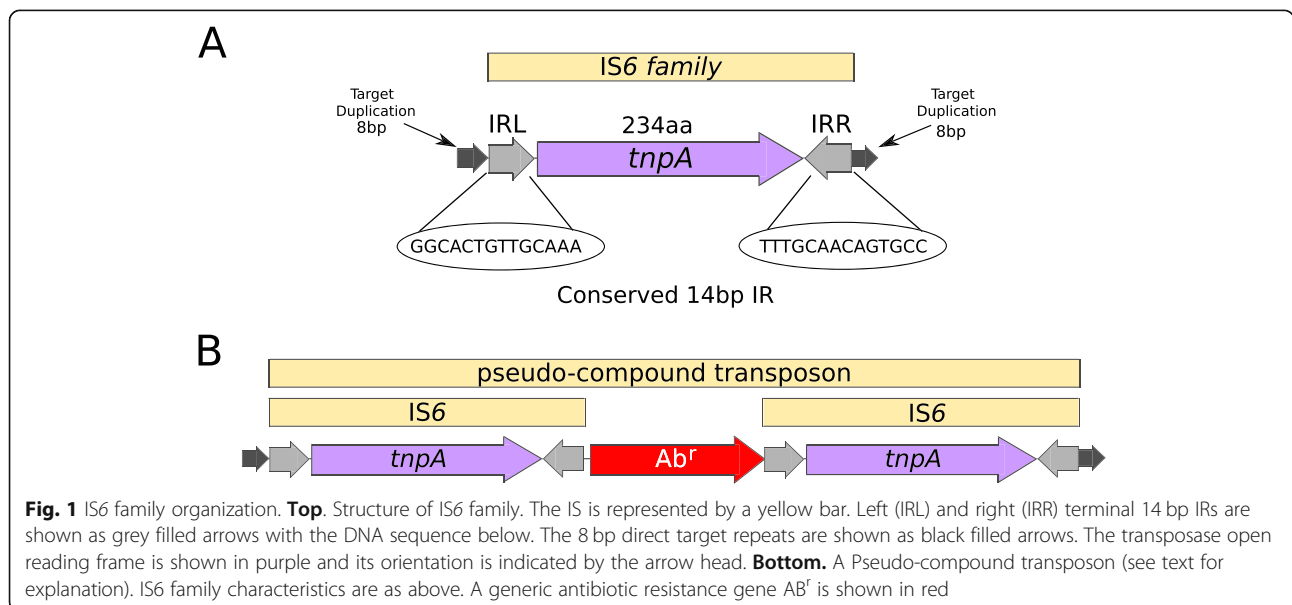


Fig. 1 IS6 family organization. **Top.** Structure of IS6 family. The IS is represented by a yellow bar. Left (IRL) and right (IRR) terminal 14 bp IRs are shown as grey filled arrows with the DNA sequence below. The 8 bp direct target repeats are shown as black filled arrows. The transposase open reading frame is shown in purple and its orientation is indicated by the arrow head. **Bottom.** A Pseudo-compound transposon (see text for explanation). IS6 family characteristics are as above. A generic antibiotic resistance gene Ab^r is shown in red

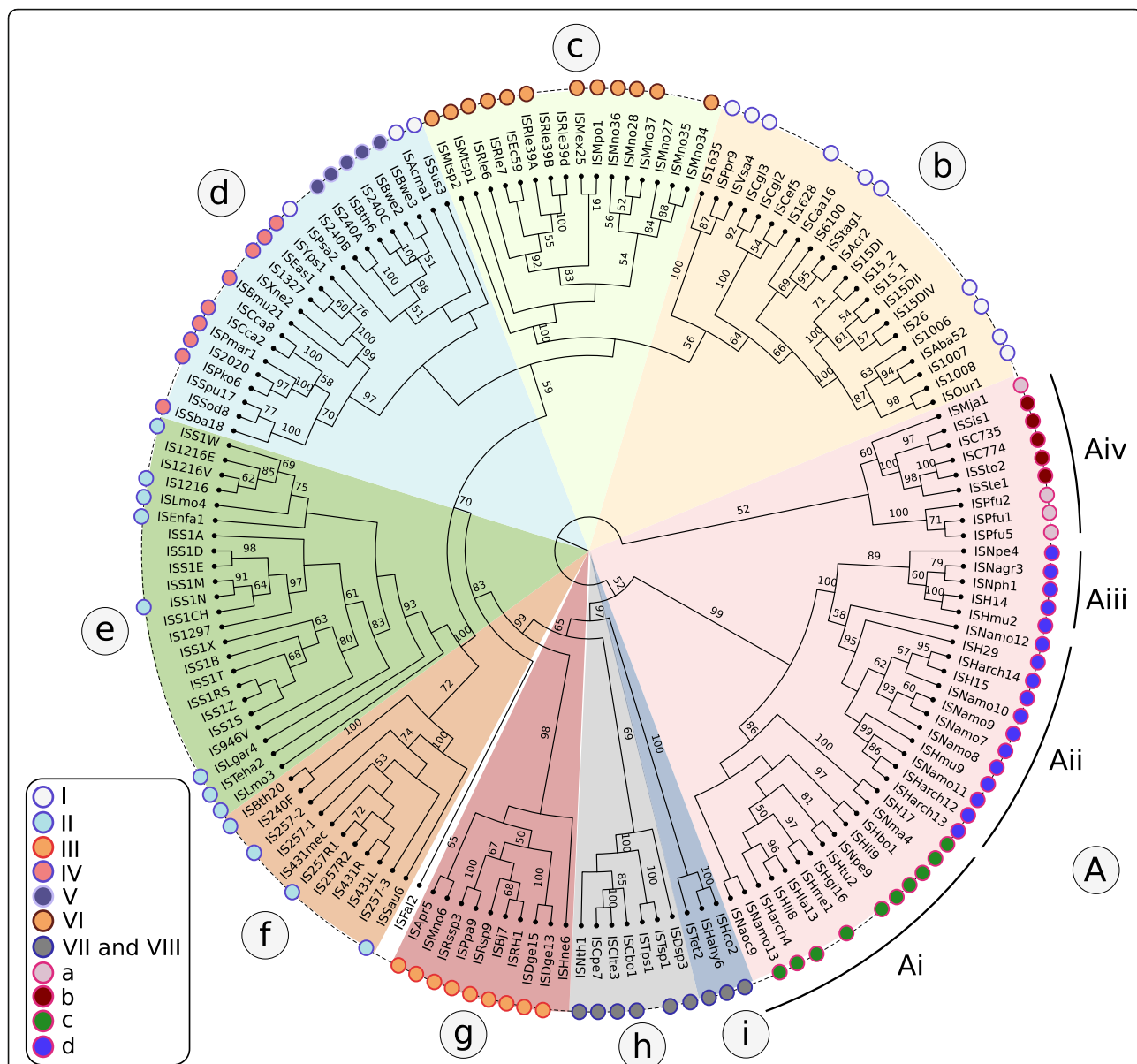


Fig. 3 A dendrogram of IS6 family members: A dendrogram of IS6 family members. The figure shows 11 major clades. The surrounding colored circles and the insert indicate the clades identified by [40]. The insert shows the correspondence between the clades from Harmer and Hall and those defined here. **Clades:** **A:** composed almost entirely of archaea; **Ai:** (n = 12) is composed of diverse *Halobacterial* species (*Halohasta*, *Haloferax*, *Natrinema*, *Natrialba*, *Halogeometricum*, *Natronomonas*, *Natronococcus*, and *Haloarcula*); **Aii:** (n = 12) is composed uniquely of *Halobacterial Euryarchaeota*; **Aiii:** (n = 5) is composed entirely of *Halobacterial Euryarchaeota* (*Haloarcula*, *Halomicrobium*, *Natronomonas*, *Natronobacterium*, *Natrinema*); **Aiv:** (n = 9) which includes both *Euryarchaeota* and *Crenarchaeota*; **b:** (n = 16) *Actinobacteria*, *Alpha-*, *Beta-*, and *Gamma-proteobacteria*; **c:** (n = 14) *Alphaproteobacteria: Rhizobiaceae* and *Methylobacteriaceae*; **d:** (n = 24) (*Alpha-*, *Beta-*, and *Gamma-proteobacteria*, *Firmicutes*, *Cyanobacteria*, *Acidobacteria* and *Bacteroidetes*); **e:** (n = 23) is composed mainly of IS from *Lactococcus*, a single *Leuconostoc* and other bacilli (*Listeria*, *Enterococcus*); **f:** (n = 11) largely *Staphylococci* with 2 *B. thuringiensis*; **g:** (n = 10) is heterogenous (*Alpha proteobacteria: Methylobacterium*, *Paracoccus*, *Roseovarius*, *Rhizobium*, *Bradyrhizobium*; *Deinococci* and *Halobacteria*); **h:** (n = 5) composed entirely of *Firmicutes* (*Natronaerobius*, *Clostridium* and *Thermoanaerobacter*); **i:** (n = 3) is composed of *Halanaerobia* and *Thermoanaerobacter*. TnpA protein sequences retrieved from ISfinder curated data set were aligned with MAFFT 7.309, and their best-fit evolutionary models were predicted with ProTest 3.2.4. A maximum likelihood tree was reconstructed with RaxML 8.2.9 using a bootstrap value of 1000. The final tree was visualized in FigTree 1.4.4 (<http://tree.bio.ed.ac.uk/software/figtree>) and edited with Inkscape 0.92.4 (<http://www.inkscape.org>)

Finding new family members: the strategy

As for all insertion sequences, there are no fully automated methods for identification of IS6 family members in the public databases and ISfinder has not undertaken an extensive database survey. As a general strategy, potential IS sequences can be compared to those in the ISfinder database using the online BLAST tool (<https://www-is.biotoul.fr/blast.php>) or TnCentral (https://tncentral.proteininformationresource.org/tn_blast.html). For genome or plasmid analysis the semiautomatic genome annotation tool (Varani et al. 2011) (ISsaga: http://issaga.biotoul.fr/issaga_index.php) can be used. This is integrated into ISfinder and compares sequences with those in the ISfinder database. There are number of other software tools available, showing different functionalities, sensitivity and precision that can be used for *ab initio* IS identification. We highlight some of these, such as OASIS [44], ISEScan [45], and ISQuest [46]. However, no software performs better than the classic and manual annotation based on structural features and genetic characteristics present in each IS family. In fact, there are still many bioinformatic challenges in obtaining a complete and proper IS identification in a given bacterial genome. For instance, it is important to ascertain manually whether the potential IS includes both terminal inverted repeats (IR; see **Organization: Terminal Inverted Repeats** below) and whether or not the IS is flanked by direct target repeats (DR). This will indicate whether the IS is functional (complete IR) and how it may have moved to its present position (presence or absence of DR; see **Mechanism: the state of play** below).

Genomic impact and clinical importance

Activity resulting in horizontal dissemination is suggested, for example, by the observation that copies identical to IS6100 originally identified in *Mycobacterium fortuitum* [47] (Fig. 3, clade b) occur in other bacteria: as part of a plasmid-associated catabolic transposon carrying genes for nylon degradation in *Arthrobacter sp.* [48]; in the *Pseudomonas aeruginosa* plasmid R1003 [49]; and in integrons of the In4-type from transposons such as Tn1696 [50, 51] and *Xanthomonas campestris* transposon Tn5393b [52]. Similar copies have also been reported in *Salmonella enterica* (typhimurium) [53], and on plasmid pACM1 from *Klebsiella oxytoca* (AF107205) [54].

Passenger genes

A number of IS families contain members, called tIS which carry passenger genes. A single member of the family, ISDsp3, present in a single copy in *Dehalococcoides sp.* BAV1 carries a passenger gene annotated as a hypothetical protein.

Expression of neighboring genes

The formation of hybrid promoters on insertion, where the inserted element provides a –35 promoter component and the flanking sequence carries a –10 promoter component, is clearly a general property of members of the IS6 family [31, 55–59] and occurs frequently.

IS257 [60] (Fig. 3, clade f) (also known as IS431), which plays an important role in sequestering a variety of antibiotic resistance genes in clinical isolates of methicillin-resistant *Staphylococcus aureus* (MRSA) (e.g. [7, 55, 56, 61, 62]), provides an outward-oriented promoter which drives expression of genes located proximal to the left end. Moreover, both left and right ends appear to carry a –35 promoter component which would permit the formation of hybrid promoters on insertion of the IS next to a resident –10 element [56, 62, 63]. Insertion can result in activation of a neighboring gene using both a hybrid promoter and an indigenous promoter [56]. IS257 is also involved in expression of *tetA* [63] and *dfrA* [55] in *S. aureus*. This is also true of IS26 which forms hybrid promoters shown to drive antibiotic resistance genes such as *aphA7* (*Pasteurella piscicida* [64] *Klebsiella pneumoniae* [31]), *bla_{SHV-2a}* (*Pseudomonas aeruginosa* [65]) and wide spectrum beta-lactam resistance gene *bla_{KPC}* [2, 4]. While IS6100 [47] (Fig. 3, clade b), often used as an aid in classifying mycobacterial isolates [66–68], drives *strA strB* expression in *X. campestris* pv. vesicatoria [52].

Pseudo-compound transposons

This IS family is able to form transposons which resemble compound transposons with the flanking IS in direct repeat but, because of the particular transposition mechanism of IS6 family members which involves the formation of cointegrates (see below), these were called pseudo-compound transposons [8, 23]. They include Tn610 (flanked by IS6100 [47]), Tn4003 and others (flanked by IS257 [7, 61, 69]), Tn2680 [13] and Tn6023 (flanked by IS26 [70]).

IS26 and the clinical landscape

In view of the particular importance of IS26 in clinical settings it is worthwhile devoting a separate section to the contribution of this IS to the clinical landscape. IS26 [13–15] (Fig. 3, clade b) is encountered with increasing frequency in plasmids of clinical importance where it is involved in: sequestering antibiotic resistance genes and generating arrays of these genes in clinically important conjugative plasmids and in the host chromosome; expression of antibiotic resistance genes; and other plasmid rearrangements (see [7, 37, 71–76]).

Recognition of its place as an important player has derived from the large number of sequences now available of multiple antibiotic resistance plasmids and

chromosomal segments such as Genomic Resistance Islands (GRI). It is now no longer practical to provide a complete analysis of the literature (A PubMed search (19th November 2020) using IS26 as the search term yielded nearly 450 citations). The references in the following are not exhaustive but simply provide examples.

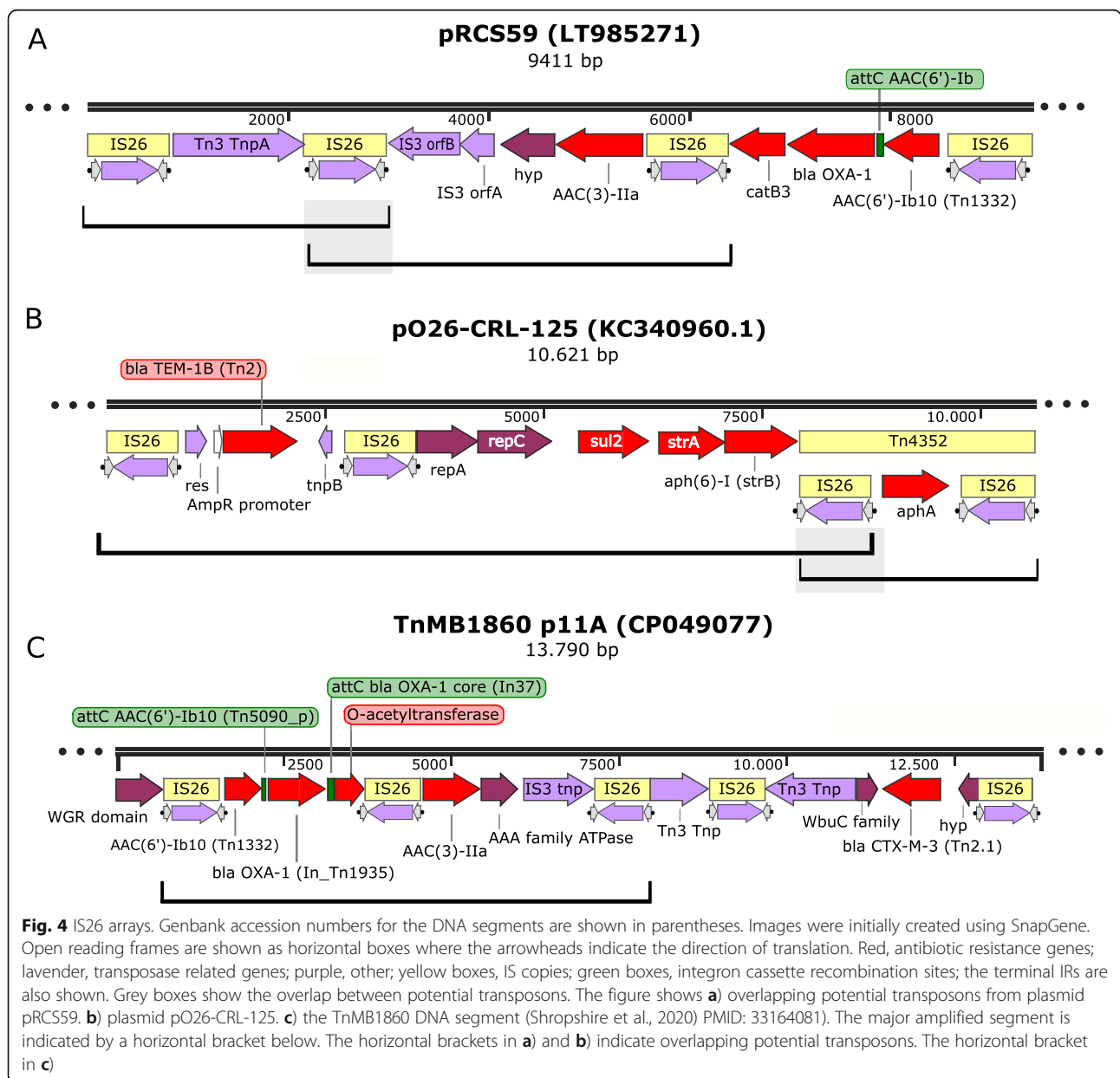
IS26 arrays

IS6 family members are often found in arrays (Fig. 4) in direct and inverted repeat in multiple drug resistant plasmids (e.g. *Salmonella typhimurium* [37, 70, 77], *Klebsiella quasipneumoniae* [78], *Acinetobacter baumannii* [74, 79], *Proteus mirabilis* [80] and uncultured sewage bacteria [81] among many others). These are

often intercalated in or next to other transposable elements rather than neatly flanking antibiotic resistance genes and can form units able to undergo tandem amplification.

IS26-mediated gene amplification

Early studies with Tn1525 (from *Salmonella enterica* serovar Panama), in which an *aphA1* (*aph* (3') (5'')-I) gene is flanked by two directly repeated copies of the IS6 family member, IS15, reported tandem amplification of *aphA1* when the host was challenged by kanamycin [82]. Restriction enzyme mapping was used to demonstrate that the amplified segments were of the type IS-*aph*-IS-*aph*-IS-*aph*-IS but no direct sequence data is available.



Amplification was thought to occur by homologous recombination between two flanking *IS15* copies since it occurred in a wildtype host but the transposon was stable in a *recA*⁻ genetic background. Another example was observed in clinical isolates of *Acinetobacter baumannii* following continuous antibiotic treatment of a single patient with Tobramycin over a period of days. Amplification occurred with Tn6020, an IS26-based transposon in which the flanking IS bracket a similar *aphA1* gene and could also be reproduced in bacterial culture [83]. It should be noted that the left hand IS26 includes an additional abutting 175 bp IS26 fragment (partial sequence JF343535). In this case, the amplified unit was proposed to be IS-*aph*-IS-IS-*aph*-IS-IS-*aph*-IS. This structure would clearly be unusual but may be due to a misinterpretation of the depth of coverage of the region or to the unusual structure of the transposon. In addition, the amplified transposon had inserted into a known target prior to amplification generating the expected eight base pair target repeat but an 8 bp segment between the first DR and the first IS end (DR-8 bp-IS-*aph*-IS-IS-*aph*-IS-IS-*aph*-IS ... DR). A third example [84] was identified during a study of clinical isolates of non-carbapenemase-producing Carbapenem-Resistant Enterobacteria, non-CP-CRE, isolated from several patients with recurrent bacteraemia. An increase in carbapenem resistance occurred partially due to IS26-mediated amplification up to 10 fold of a DNA segment carrying *bla*_{OXA-1} and *bla*_{CTX-M-1} genes. These form part of a larger chromosomal structure of IS26 arrays which they call TnMB1860 (Fig. 4). It was unclear whether this cassette amplification was due to transposition activity or, gene amplifications such as those observed with *IS1* [85–90] which may occur by replication slippage between direct repeats or by unequal crossing-over [91, 92].

Another example has been revealed by Hastak et al. [93] who analysed a multi resistant derivative of the clinically important, globally dispersed pathogenic, *Escherichia coli* ST131 subclade H30Rx, isolated from a number of bacteraemic patients and revealed that increased piperacillin/tazobactam resistance was due to IS26-mediated amplification of *bla*_{TEM-1B}. A similar type of limited (tandem dimer) amplification of an IS26-flanked *bla*_{SHV-5}-carrying DNA segment found in plasmids from a number of geographically diverse enteric species was identified in a nosocomial *Enterobacter cloacae* strain [94]. A more extensive amplification (> 10 fold) was observed with the same DNA segment located in a different plasmid in a well-characterised laboratory strain of *Escherichia coli* and occurred in a *recA*-independent manner [72]. While even higher levels of tandem amplification (~ 65 fold) of the *aphA1* gene were identified in the IS26-based Tn6020 in *Acinetobacter baumannii* [83].

IS26-mediated plasmid Cointegration

The earliest studies on this family of IS demonstrated that they could generate cointegrates as part of the transposition mechanism (see **Cointegrate formation** below) [12, 14, 16, 19, 20, 39].

Several studies have now demonstrated that this can occur in a clinical setting. For example, plasmid pBK32533 (KP345882) [95], carried by *E. coli* BK32533 isolated from a patient with a urinary tract infection is an IS26-mediated cointegrate between *Klebsiella pneumoniae* BK30661 plasmid pBK30661 (KF954759) [96] and a relative of *Salmonella enterica* p1643_10 (KF056330) [97]. Interestingly, the flanks of the IS26 copies at the junction of the two plasmids are TGTTTT TT-IS-TTATTAAT and TTATTAAT-IS-TGTTTTTT. The most parsimonious explanation would be that pBK32533 was generated in a multi-step inter-molecular transposition event: in one step, an IS26 copy from an unknown source used a TTATTAAT target sequence in pBK30661 and this cointegrate was then resolved resulting in pBK30661 containing an IS26 copy flanked by the target repeat (TTATTAAT-IS26-TTATTAAT) and, in a second step, a TGTTTTTT sequence in p1643_10 was targeted by the pBK30661 IS26 to generate the final cointegrate in which the two IS26 copies are flanked by the observed target sequences. Additional examples have been identified in KPC-producing *Proteus mirabilis* [80] and in *Klebsiella pneumoniae* also involving inversions [76, 98].

Organization

IS6 family members range in length from 789 bp (IS257) to 880 bp (IS6100) (Fig. 2a) and generally create 8 bp direct flanking target repeats (DR) on insertion [13].

The transposase

A single transposase *orf* is transcribed from a promoter at the left end and stretches across almost the entire IS. The putative transposases (Tases) are between 213 (IS15) and 254 (IS6100) amino acids long with a majority in the 220–250 amino acid range. They are very closely related and show identity levels ranging from 40 to 94% with a helix-turn-helix (HTH) and a typical catalytic motif (DDE) (Fig. 2b, c, Fig. S2). Translation products of this frame have been demonstrated for IS240 [35]. However, the 7 members of clade h, all from *Clostridia*, are somewhat larger (340–350 amino acids) as a consequence of an N-terminal extension in the transposases with a predicted Zinc Finger (ZF) composed of several CxxC motifs (Fig. 2b; Fig. S2). A Blast analysis of the non-redundant protein database at NCBI revealed a large number of IS6 family transposases of this type (data not shown). The vast majority of these were from Clostridial species. In addition, the transposases of

members of clade i (450 amino acids) have both the ZF domain and a supplementary N-terminal extension (Fig. 2b).

Several members (e.g. *ISRle39a*, *ISRle39b* and *ISEnfa1*) apparently require a frameshift for T_pase expression. It is at present unclear whether this is biologically relevant. However, alignment with similar sequences in the public databases suggests that *ISEnfa1* itself has an insertion of 10 nucleotides and is therefore unlikely to be active.

Transposase expression

In the case of IS26, the promoter is located within the first 82 bp of the left end and the intact *orf* is required for transposition activity [15]. Little is known concerning the control of transposase expression although transposition activity of IS6100 in *Streptomyces lividans* [99] is significantly increased when the element is placed downstream from a strong promoter. This is surprising since IS generally incorporate mechanisms to restrict transposition induced by insertion into highly transcribed genes (e.g. [100] and references therein).

Terminal inverted repeats

All carry short related (15–20 bp) terminal IR. As shown in Fig. 2d, in spite of the wide range of bacterial and archaeal species in which family members are found, there is a surprising sequence conservation. In particular, the presence of a G dinucleotide at the IS tips and cTGTt and caaa internal motifs (where uppercase letters are fully conserved and lowercase letters are strongly conserved nucleotides). Sequence motifs are more pronounced when each clade is considered separately (Fig. S1).

Mechanism: the state of play

Early studies suggested that IS6 family members give rise exclusively to replicon fusions (cointegrates) in which the donor and target replicons are separated by two directly repeated IS copies (e.g. *IS15D*, *IS26*, *IS257*, *IS1936*) [12, 14, 16, 20, 101]. More recent results principally with *IS26* have suggested that, perhaps like *IS1* (*IS1* family) [102] and *IS903* (*IS5* family) [103, 104], members of this IS family may be able to transpose using alternative pathways [23, 105–107].

Cointegrate formation

Transposition of IS6 family elements to generate cointegrates [12, 16, 18, 19] presumably occurs in a replicative manner. As shown in Fig. 5 (top), intermolecular replicative transposition of this type generates fused donor and target replicons which are separated by two copies of the IS in direct repeat at the replicon boundaries. The initial direct repeats (DR) flanking the donor IS are distributed between each daughter IS in the cointegrate as is the DR generated in the target site. Recombination between the

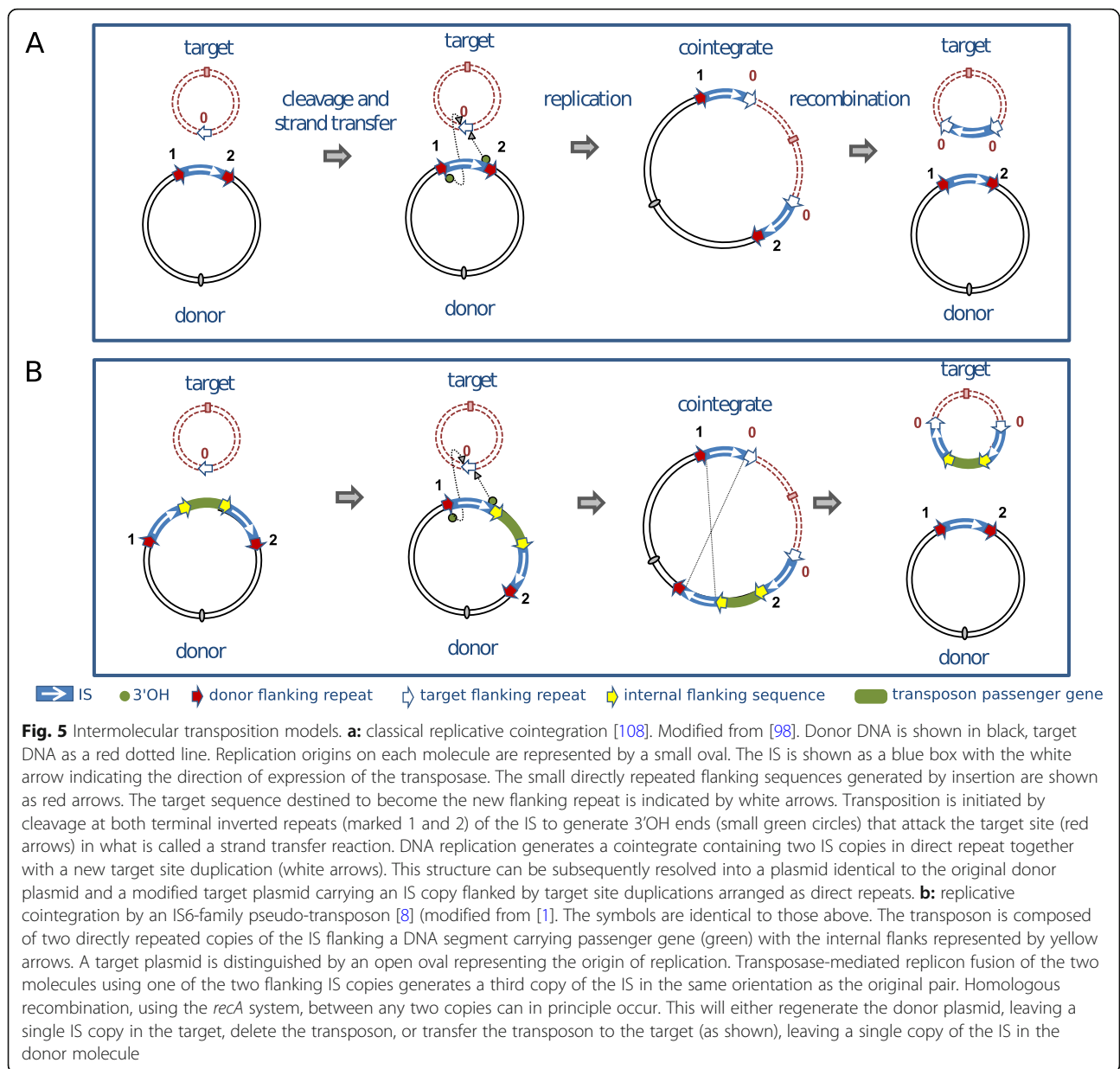
two IS then regenerates the donor molecule with the original DRs and a target molecule in which the IS is flanked by new DR. No known specific resolvase system such as that found in Tn3-related elements has been identified in this family but “Resolution” of IS6-mediated cointegrates was observed to depend on a functional *recA* gene in several cases and therefore occurs using the host homologous recombination pathway [12, 16].

While the intermolecular cointegrate pathway leads to replicon fusion, transposition can also occur within the same replicon. Intramolecular transposition using the replicative mechanism gives rise to deletion or inversion of DNA located between the IS and its target site. The outcome depends on the orientation of the two attacking IS ends (Fig. 6). Intramolecular transposition of this type can explain the assembly of antibiotic resistance gene clusters (e.g. [76]).

IS6 family members are known to generate structures that resemble composite transposons in which a passenger gene (such as a gene specifying antibiotic resistance) is flanked by two IS copies. Generally, the flanking IS in these compound structures can occur as direct or inverted repeat copies. However, in the case of IS6 functional “compound transposons”, the flanking IS are always found as direct repeats. This is a direct consequence of the (homologous) recombination event required to resolve the cointegrate structure [12, 16]. As shown in Fig. 5 (bottom) [1], transposition is initiated by one of the flanking IS to generate a cointegrate structure with three IS copies. “Resolution” resulting in transfer of the transposon passenger gene requires recombination between the “new” IS copy and the copy which was not involved in generating the cointegrate. The implications of this model [1, 8] are that the transposon passenger gene(s) are simply transferred from donor to target molecules in the “resolution” event and are therefore lost from the donor “transposon”. Clearly this pathway could initiate from a donor in which the flanking IS6 family members were inverted with respect to each other. However, transposition would be arrested at the cointegrate stage because there is no suitable second IS to participate in recombination. It is for this reason that compound IS6-based transposons carry directly repeated flanking IS copies. These previously published models (e.g. [1, 8, 76, 98] have recently been revisited and it has been recently proposed [23] that the term pseudo-compound transposons first used over 30 years ago [8] should be resurrected to describe these IS6 family structures.

Circular transposon molecules: translocatable units (TU)

Although *IS26* transposition appears to be replicative with formation of cointegrate molecules, results from *in vivo* experiments suggest that its transposition may be



more complex [107]. The idea that IS26 might mobilize DNA in an unusual way arose from the observation that IS6 family members can often be found in the form of arrays [106, 107] which could be interpreted as overlapping pseudo-compound transposons [23] (Figs. 4 and 5). Note that IS26 and potential IS26-based transposons do not necessarily carry flanking direct target repeats but, as is the case for other TE which transpose by replicative transposition such as members of the Tn3 family, intra-molecular transposition would lead to loss of the flanking repeats (Fig. 6). This led to the suggestion that IS26 might be able to transpose via a novel circular form called translocatable units (TU) [106, 107] (not to be confused with those originally described in the sea

urchin and other eukaryotes [109]) such as those shown in Fig. 7. These potential circular transposition intermediates which were proposed to include a single IS26 copy along with neighboring DNA are structurally similar to IS1-based circles observed in the 1970s (e.g. [85, 88]). Translocatable units differ from the transposon circles identified during copy-out-paste-in transposition by IS of the IS3 (see [110]), IS21 [111], IS30 [112], IS256 [113, 114] and ISL3 [115] families where the circular IS transposition intermediate has abutted left and right ends separated by a few base pairs and is extremely reactive to the cognate transposase. In stark contrast, for IS26, the IS ends would be separated by the neighboring DNA sequence rather than by a few base pairs (Fig. 7).

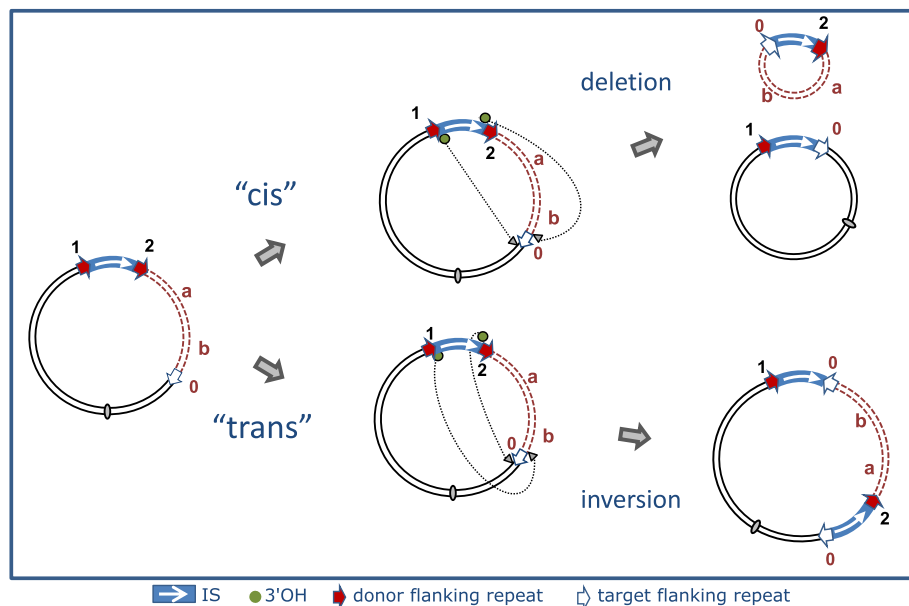


Fig. 6 Intramolecular transposition. Symbols are identical to those in Fig. 5. The red dotted lines represent the DNA segment between the resident IS and its intramolecular target shown as a white arrow and marked “0”. In addition, a and b represent two markers on this DNA segment. The 3'-OH groups generated by cleavage at both IS ends can either attack the target site on the same strand (*cis*) (top pathway) or the opposite strand (*trans*) (bottom pathway). When *in cis*, DNA between the IS and target site is deleted as a circle containing the markers “a” and “b”, one IS copy flanked by one copy of the original flank, 2, and one copy of the target flank, 0. The other partner also contains a single IS copy with one copy of the original flank, 1, and one copy of the target flank, 0. When the reaction occurs *in trans*, DNA between IS and target site is instead inverted (“a b” becomes “b a”), bracketed by the original IS and a new copy in an inverted orientation. The target site is also duplicated but in inverted orientation, and one copy of the original flank and one copy of the target flank is associated with each IS copy

Evidence for the excision step of translocatable units was obtained [106] from the study of the stability of two IS26-based pseudo-compound transposons, “wildtype” Tn4352 [34] and “mutant” Tn4352B [116] which carry the *aphA1* gene specifying resistance to kanamycin.

Tn4352B is a special mutant derivative of Tn4352 including an additional GG dinucleotide at the left internal end of one of the component IS26 copies to generate a string of 5 G nucleotides at the IS tip which appears to render the transposon unstable. Cells carrying the

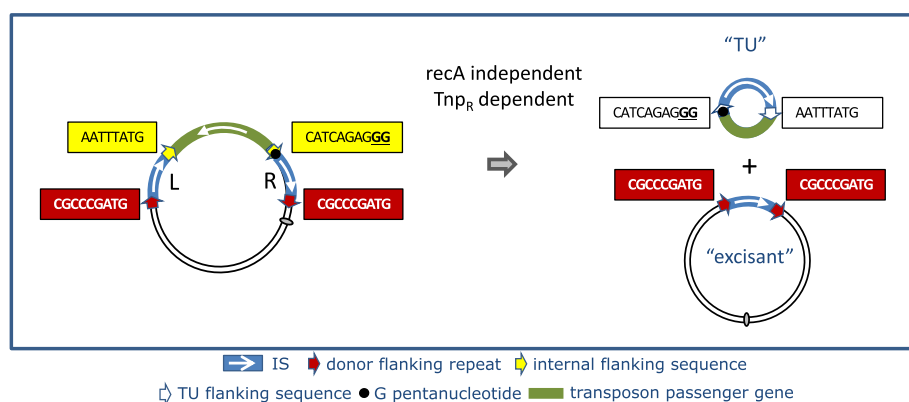


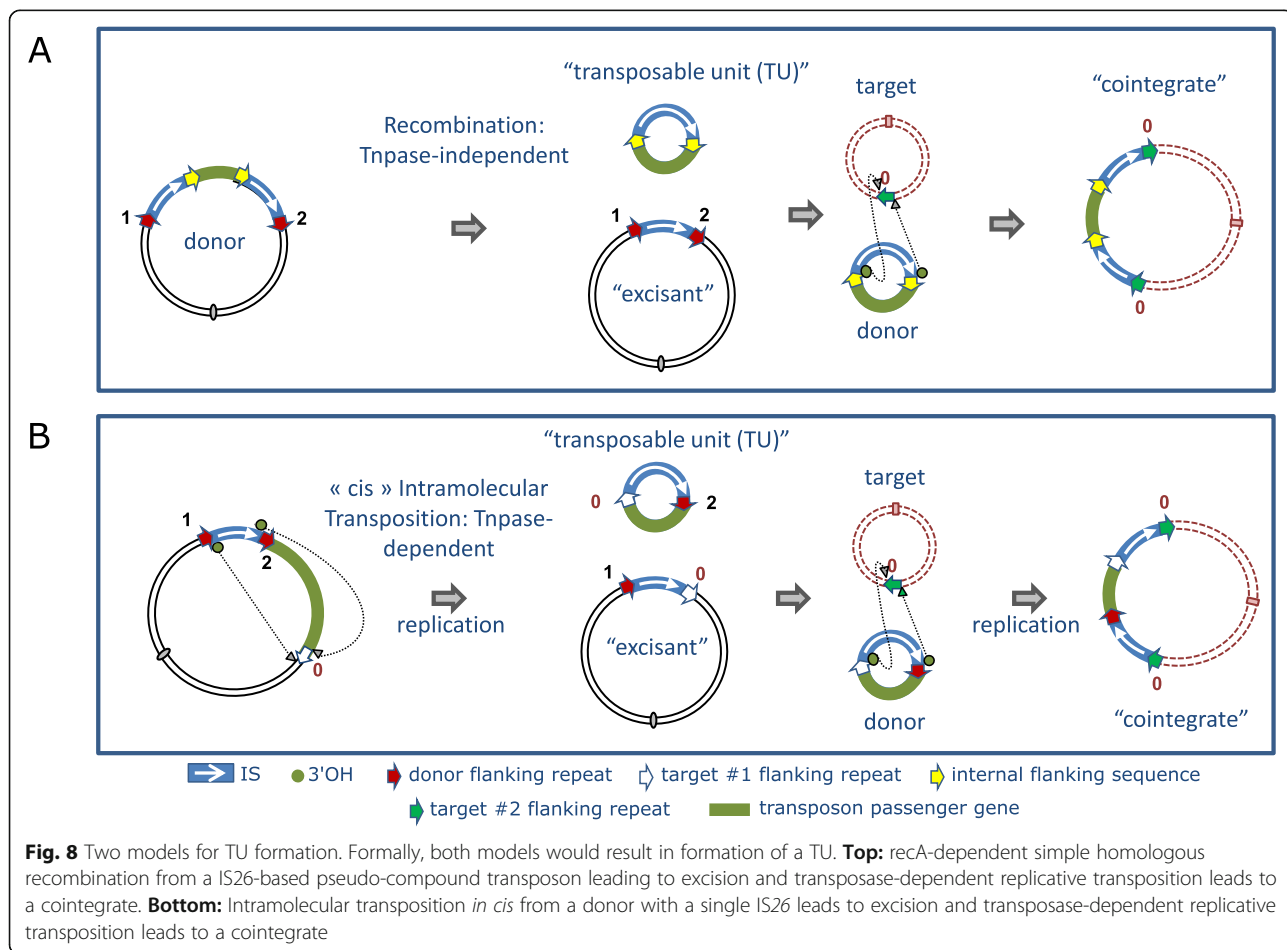
Fig. 7 Summary of analysis of TU formation from the mutant transposon Tn4352B. The authors [106] used an IS26-based transposon, Tn4352B, carrying the *aphA1* gene in which the right hand IS fortuitously carried an additional GG dinucleotide at the left internal end of one of the component IS26 copies to generate a GGGGG pentanucleotide at the IS tip. This appears to render the transposon unstable resulting in an excision of a non-replicative circle, called a translocatable element (TU), carrying a single IS copy and the *aphA1* gene. The other partner, the parental plasmid from which the TU had been excised, retained one IS copy and the original 8 base pair direct target repeat (framed in red). The sequence of the IS flanks in the TU were not reported. Symbols are the same as those used in Fig. 6

plasmid lose the resistance gene from the mutant *Tn4352B* at an appreciable rate in the absence of selection. This generates a “donor” plasmid with one copy of IS26 flanked by the original *Tn4352B*-associated 8 bp direct repeats and an excision product with the size expected for a TU containing the second IS flanked by the sequences of the original central segment presumably including the additional GG dinucleotide together with the *aphA1* gene. TU formation, as judged by a PCR reaction, appeared to be dependent on the GG insertion (since surprisingly, no TU could be detected from the wildtype *Tn4352*) but not on the surrounding sequence environment. Excision required an active transposase. In a test in which the target plasmid also carried an IS26 copy (a targeted integration reaction – see below), there appeared to be no difference in cointegrate formation frequencies between single IS26 copies with or without the additional GG dinucleotide. However, results from a standard integration test into a plasmid without a resident IS26 copy were not reported. The excision process occurs in a *recA*⁻ background and therefore does not require the host homologous recombination system. Moreover frameshift mutations in both IS, which should

produce severely truncated transposase, eliminated activity. This implies that the process is dependent on transposition. However, excision continued to occur if the transposase of the GG-IS copy was inactivated but was eliminated when the same transposase mutation was introduced into the “wildtype” IS copy. This is curious since it implies that the IS26 transposase must act exclusively *in cis* on the IS from which it is expressed.

A summary of these results is shown in Fig. 7. These data suggest that excision is driven by the wildtype IS26 (L), leaving the right hand IS in the excisant. At present, there is no obvious mechanistic explanation for this phenomenon. It should be noted that recombination between directly repeated copies of *IS1* which flank the majority of antibiotic resistance genes in the plasmid R100.1 (NR1) generates a non-replicative circular molecule, the r-determinant (*r-det*), with a single *IS1* copy. In this case too, this “constitutive” circle production is due to a (uncharacterized) mutation in the plasmid, although in this case, circle production requires *recA* [117].

However, “Classical” recombination and transposition models do not fit the data. The results appear to rule out two obvious models (Fig. 8) since although both



would generate the correct TU and “excisant”, the first (Fig. 8 top panel) requires homologous recombination between two directly repeated IS26 copies (mechanistically equivalent to the “resolution” step in intermolecular IS6 transposition) and the second (Fig. 8 bottom panel), which requires a functional transposase as observed [106, 107], would not generate the correct flanking sequences. Modification of the transposition model to take into account the entire transposon (Fig. 9) in which the active IS26L uses either of flanking sequences of IS26R does not generate the correct structures. Thus the observed structures must be generated by another, and at present unknown, pathway. One possibility is that TU are generated by reversing a non-replicative targeted insertion mechanism presented below (see **Targeted Transposition**).

To summarize: it has been clearly demonstrated that circular DNA species carrying a single IS26 copy together with flanking “passenger” DNA can be generated efficiently in vivo from a variant plasmid replicon [116] and also that replicons carrying a single IS26 copy are

capable of integrating into a second replicon to form a cointegrate. This occurs at a frequency 10^2 -fold higher if the target plasmid contains a single IS copy and in a targeted manner not involving IS duplication.

The TU insertion pathway was addressed by transforming TU, constructed in vitro taking advantage of a unique IS26 restriction site, into recombination deficient cells carrying an appropriate target plasmid [105]. Establishment of the *aphA1*-carrying TU was dependent on the presence of a resident plasmid carrying an IS26 copy and occurred next to the resident IS26 copy. The DNA of two TU each with a different antibiotic resistance gene was shown to undergo this type of targeted integration and, moreover, were able to consecutively insert to generate a typical IS26 array. Therefore, artificially produced TU are capable of insertion.

Targeted transposition

Targeted IS26 transposition was also observed in intermolecular cointegrate formation where the cointegrate formation frequency was significantly increased (about

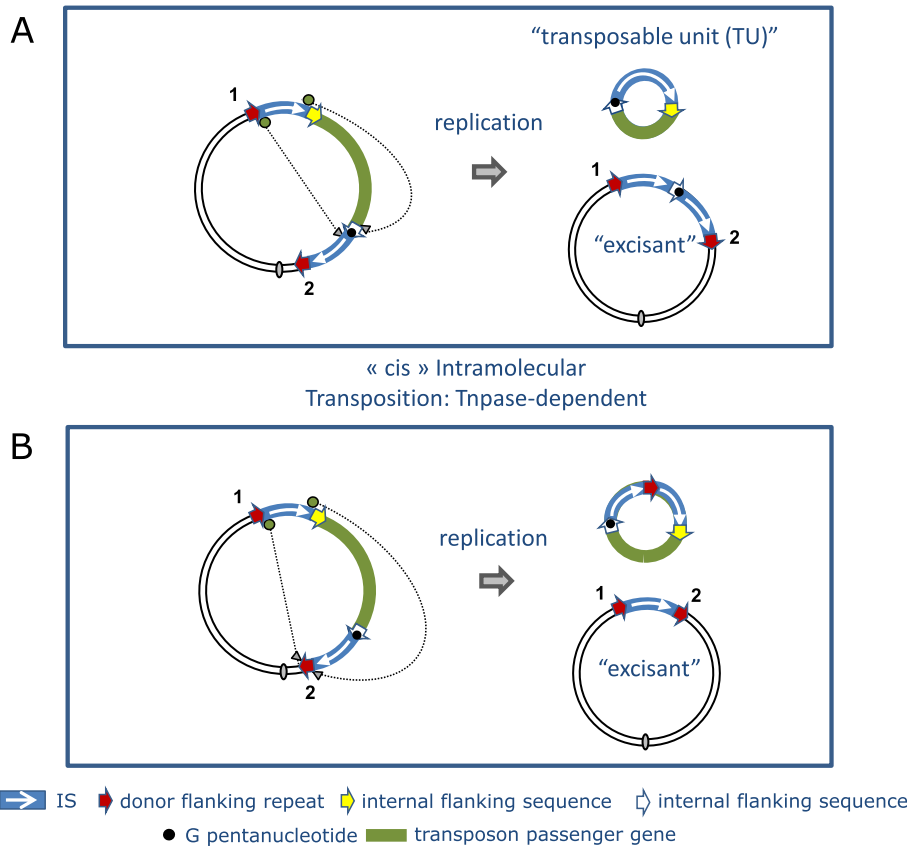


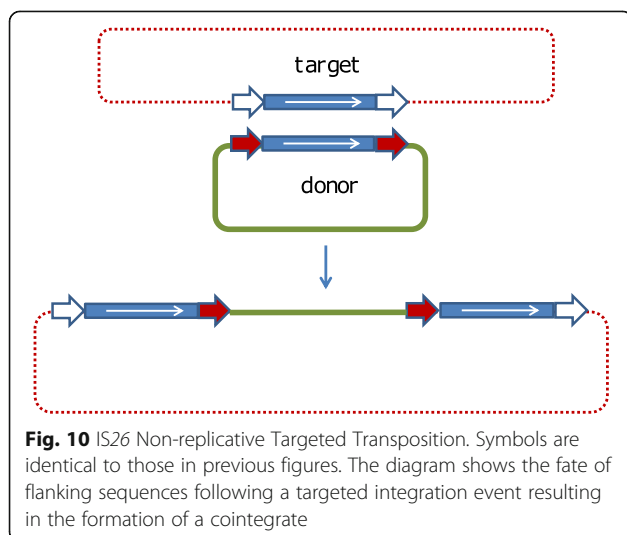
Fig. 9 Two Models for TU formation from the Pseudo-compound Transposon Tn4325B. Symbols are as in the previous figures. The small filled circle within one of the internal IS flanks (white arrow) indicates the additional GG dinucleotide carried by Tn4325B. Both use an intramolecular replicative transposition pathway in a cis configuration. In the top panel, the wildtype IS uses the flank of the mutated IS as a target. This would generate a TU with a single IS and both internal flanking sequences and an excisant with two tandem IS copies separated by a mutant flank. In the lower panel, the TU carries two tandem IS copies and the excisant

100 fold) if the target replicon also contained an IS26 copy [107]. A similar result was obtained in *Escherichia coli* with a related IS, *IS1216* [118] whereas a third member of the family, *IS257* (*IS431*) showed a much lower level of activity using the same assay. As for TU integration, this phenomenon does not appear to be the result of homologous recombination between the IS copies carried by donor and target molecules since the reaction was independent of RecA. Using a PCR-based assay to identify the replicon fusions between IS26-containing donor and target plasmids, it was observed that the resulting cointegrate (Fig. 10) did not contain an additional copy of IS26 which would be expected if replicative transposition were involved (Fig. 9). This suggests that the phenomenon results from a conservative recombination mechanism. Despite the absence of RecA, the observed cointegrate is structurally equivalent to the recombination product between the two IS26 copies in the donor and target plasmids. However, it indeed appears to be transposition related since the phenomenon requires an active transposase in both donor and target replicons [107]. When each of the triad of conserved DDE residues were mutated individually in the donor plasmid, the targeted insertion frequency decreased significantly.

Another characteristic of the products was that the flanking 8 bp repeats carried by the donor and recipient IS26 copies are in some way exchanged [107] (Fig. 10). This suggests a model in which transposase might catalyze an exchange of flanking DNA during the fusion process.

A model for targeted integration

One possibility (Fig. 11) is that two IS ends from different IS copies in separate replicons are synapsed intermolecularly in the same transpososome (Fig. 11i). Strand

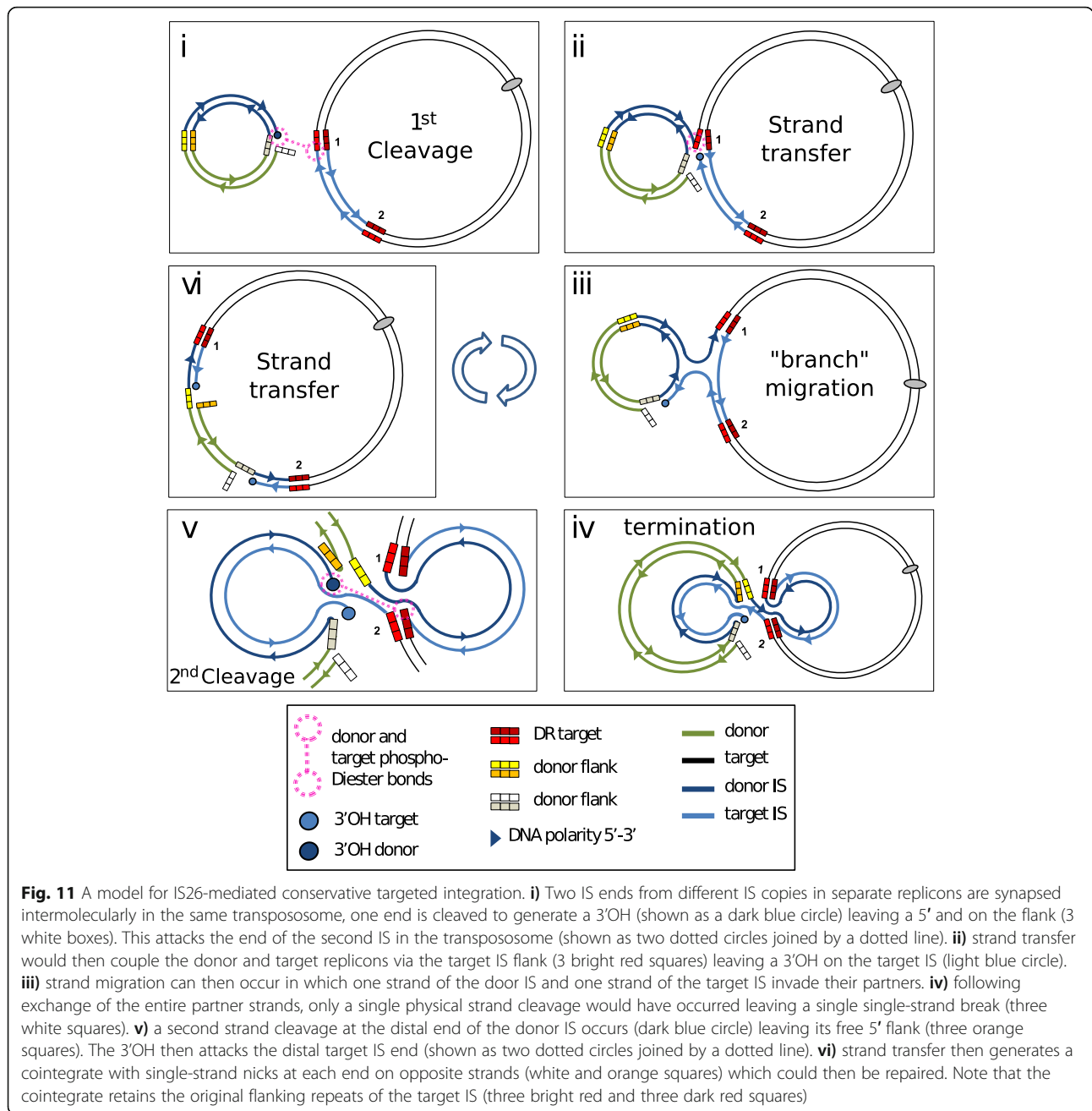


exchange would then couple the donor and target replicons (Fig. 11 ii). A similar mechanism has been invoked to explain “targeted” insertion of IS3 and *IS30* family members into TIRs [119, 120]. Branch migration (Fig. 11 iii) would lead to exchange of an entire IS strand (Fig. 11 iv) and cleavage at the distal IS end and strand transfer (Fig. 11v) would result in the observed cointegrate (Fig. 11 vi) containing a single strand nick on opposite strands at each end of the donor DNA molecule. These could be repaired or eliminated by plasmid replication. Each IS would be composed of complementary DNA strands from each of the original donor and target IS copies. This proposed mechanism would retain the DNA flanks of the IS in the original target replicon, be dependent on an active transposase and independent of the host *recA* system. It seems probable that mismatches between the two participant IS would inhibit the strand migration reaction. This may be the reason for the observation that introducing a frameshift mutation by insertion of additional bases into the transposase gene of either participating IS26 copy reduces the frequency of targeted cointegration [107] since, not only does this produce a truncated transposase but also introduces a mismatch. As in the case of intermolecular targeting of the IS3 family member, *IS911* [121], might require the RecG helicase to promote strand migration.

The model shown in Fig. 11 presents the transposition process as a progression involving two consecutive temporally separated strand cleavages separated by a strand migration. However, it seems equally probable that both cleavage reactions are coordinated within a single transpososome including both donor IS ends and the target IS ends. This would be compatible with the known properties of *trans* cleavage of several transposases in which a transposase molecule bound to one transposon end catalyzes cleavage of the opposite end. Recently, evidence has been presented supporting this type of model [122]. Using two IS, *IS1006* and *IS1008* [123] which have significant identity to IS26 their ends, together with a hybrid molecule *IS1006/1008* constructed in vitro, it was shown that targeted integration required both identical transposases and identical DNA sequences at the reacting ends. The authors propose a model in which a single IS end is cleaved and transferred to the flank of the target IS end, an event which creates a Holliday junction which, on branch migration, is resolved. This differs from the model shown here (Fig. 11) since it does not involve transposase-mediated cleavage at the second IS end. It is similar to that proposed for targeted insertion of *IS911* [119, 121, 124, 125] which requires the RecG helicase and, presumably, RuvC.

Conclusions and future directions

We have presented a survey of our present knowledge concerning the properties, distribution and activities of



IS6 family members and their importance, in particular that of IS26, in gene acquisition and gene flow of anti-bacterial resistance in enterobacteria. There are many questions which remain to be answered and we feel that some care should be exercised in interpreting some of the very interesting results in the absence of formal proof. For example, the notion that the basic IS6 family transposition unit is a non-replicative circular DNA molecule carrying a single IS copy is attractive and would provide a nice parallel to the integron antibiotic resistance gene cassette intermediates [126–128] but such a molecule, a TU, has thus far been formally observed in

only a single case. It was generated in vivo from an IS26-flanked pseudo-transposon in which one of the two flanking IS involved included a mutation and rendered the transposon unstable. The “wildtype” transposon was stable [106]. Since “TU” is now being used in the literature to describe IS26-flanked DNA segments in multimeric arrays (e.g. [93]), it is essential to provide more formal evidence that these non-replicative DNA circles are indeed general intermediates in the IS26 transposition pathway and are not simply amplified units (AU). The fact that a replicating plasmid containing a single IS copy is able to form cointegrates does

not a priori support a model for TU transposition and is not necessarily simply a TU that has the capacity to replicate [107] although the observation that artificially constructed TU can undergo targeted insertion when introduced into a suitable cell by transformation [105] supports the TU hypothesis. A second important question to be answered is how targeted integration occurs. We have suggested one model and suggested ways it might be tested (Fig. 11). The answers to many of these fascinating outstanding questions will be only be formally provided when the biochemistry of the reactions is known.

Supplementary Information

The online version contains supplementary material available at <https://doi.org/10.1186/s13100-021-00239-x>.

Additional file 1: Figure S1a-g. Left (IRL) and right (IRR) and a combined IRL + IRR inverted terminal repeats for each clade are shown in WebLogo format [25]. **Figure S1h.** The last section shows an alignment of the ends of clade Aiv adjusted by hand.

Additional file 2: Figure S2. Alignment of a representative sample of the transposases of IS6 family members including members of each major clade. Alignment was by Clustal [129] and the graphic output from SnapGene. The figure shows the probable zinc finger N-terminal extension (consecutive CxxC motifs), the helix-turn-helix domain (HTH) and the catalytic domain (DDE K/R).

Acknowledgements

We would like to thank Jian Zhang (Protein Information Resource PIR, Georgetown University), Hongzhan Huang (Protein Information Resource PIR, University of Delaware), Cathy Wu (Protein Information Resource, PIR Georgetown University and University of Delaware), Erik Snedrud and Patrick McGann (Walter Reed Army Institute of Research) and Daniillo Oliveira Alvarenga (Universidade Estadual Paulista, Jaboticabal, Sao Paulo, Brazil) for providing essential expert assistance and both conceptual and practical support for TnCentral, Fred Dyda and Alison Hickman (NIDDK, NIH, Bethesda, Maryland, USA) for reading the manuscript and for suggestions and Sally Partridge (The University of Sydney and Westmead Hospital, Australia) for critical comments.

Authors' contributions

AMV carried out the phylogenetic analyses. SH participated in developing the molecular models. PS assembled and curated the IS6 family database in ISfinder, standardised nomenclature and performed an analysis of the transposase domains. KR participated in the TnCentral database and design. MC conceived the study, participated in its design and coordination drafted the manuscript and figures. All authors read and approved the final manuscript.

Funding

This work was primarily funded by the Global Emerging Infections Surveillance (GEIS) and Response System (P0020_18_WR; awarded to Michael Chandler and Patrick McGann), the Jiangsu Natural Science Foundation (BK20200316, awarded to Susu He), and the Fundamental Research Funds for the Central Universities (14380470; awarded to Susu He).

Availability of data and materials

The data are available from the corresponding author and from ISfinder (<https://www-is.biotoul.fr/>), TnCentral (<https://tncentral.proteininformationresource.org/>) and TnPedia (<https://tnpedia.fcav.unesp.br/>).

Declarations

Ethics approval and consent to participate

Not applicable.

Consent for publication

Not applicable.

Competing interests

The authors declare that they have no competing interests.

Author details

¹School of Agricultural and Veterinary Sciences, Universidade Estadual Paulista, Jaboticabal, Sao Paulo, Brazil. ²State Key Laboratory of Pharmaceutical Biotechnology, Medical School of Nanjing University, Nanjing 210093, Jiangsu, China. ³Centre de Biologie Intégrative-Université Paul SABATIER, CNRS - Laboratoire de Microbiologie et Génétique Moléculaires, UMR 5100 - bât. CNRS-IBCG, Toulouse, France. ⁴Protein Information Resource, Department of Biochem., Mol. and Cell. Biol, Georgetown University Medical Center, Washington, DC, USA. ⁵Department of Biochem., Mol. and Cell. Biol, Georgetown University Medical Center, Washington, DC, USA.

Received: 22 January 2021 Accepted: 25 February 2021

Published online: 23 March 2021

References

- Mahillon J, Chandler M. Insertion sequences. *Microbiol Mol Biol Rev.* 1998; 62(3):725–774. PMID: PMC98933.
- Siguier P, Goubeyre E, Chandler M. Bacterial insertion sequences: their genomic impact and diversity. *FEMS Microbiol Rev.* 2014; 38(5):865–891. PMID: PMC7190074.
- Siguier P, Perochon J, Lestrade L, Mahillon J, Chandler M. ISfinder: the reference centre for bacterial insertion sequences. *Nucleic Acids Res.* 2006; 34(Database issue):D32–D36. PMID: PMC1347377.
- Siguier P, Goubeyre E, Varani A, Ton-Hoang B, Chandler M. Everyman's guide to bacterial insertion sequences. *Microbiol Spectr.* 2015; 3(2):MDNA3–M0030. PMID: 26104715
- Siguier P, Gagnevin L, Chandler M. The new IS1595 family, its relation to IS1 and the frontier between insertion sequences and transposons. *Res Microbiol* 2009;160(3):232–241. PMID: 19286454
- Enright AJ, Van Dongen S, Ouzounis CA. An efficient algorithm for large-scale detection of protein families. *Nucleic Acids Res.* 2002; 30(7):1575–1584. PMID: PMC101833.
- Partridge SR, Kwong SM, Firth N, Jensen SO. Mobile genetic elements associated with antimicrobial resistance. *Clin Microbiol Rev.* 2018;31(4). PMID: PMC6148190.
- Galas DJ, Chandler M. Bacterial Insertion Sequences. In: Berg DE, Howe MM, editors. *Mob DNA*. Washington: American Society for Microbiology; 1989. p. 109–62.
- Berg DE, Davies J, Allet B, Rochaix JD. Transposition of R factor genes to bacteriophage lambda. *Proc Natl Acad Sci USA.* 1975; 72(9):3628–3632. PMID: PMC433049.
- Labigne-Roussel A, Courvalin P. IS15, a new insertion sequence widely spread in R plasmids of gram-negative bacteria. *MolGenGenet.* 1983;189: 102–112. PMID: 6304459.
- Trieu-Cuot P, Courvalin P. Nucleotide sequence of the transposable element IS15. *Gene.* 1984;30:113–120. PMID: 6096209.
- Trieu-Cuot P, Courvalin P. Transposition behavior of IS15 and its progenitor IS15-delta: are cointegrates exclusive end products? *Plasmid.* 1985;14(1):80–89. PMID: 2994132
- Mollet B, Iida S, Shepherd J, Arber W. Nucleotide sequence of IS26, a new prokaryotic mobile genetic element. *Nucleic Acids Res.* 1983; 11(18):6319–6330. PMID: PMC326375.
- Iida S, Mollet B, Meyer J, Arber W. Functional characterization of the prokaryotic mobile genetic element IS26. *Mol Gen Genet* 1984;198(2):84–89. PMID: 6097800
- Mollet B, Iida S, Arber W. Gene organization and target specificity of the prokaryotic mobile genetic element IS26. *Mol Gen Genet* 1985;201(2):198–203. PMID: 3003524

16. Brown AM, Coupland GM, Willetts NS. Characterization of IS46, an insertion sequence found on two IncN plasmids. *J Bacteriol.* 1984; 159(2):472–481. PMID: PMC215669.
17. Nucken EJ, Henschke RB, Schmidt FR. Nucleotide-sequence of insertion element IS15 delta IV from plasmid pBP11. *DNA Seq.* 1990;1:85–88. PMID: 1966776.
18. Bräu B, Piepersberg W. Cointegrational transduction and mobilization of gentamicin resistance plasmid pWP14a is mediated by IS140. *Mol Gen Genet* 1983;189(2):298–303. PMID: 6304469
19. Nies BA, Meyer JF, Wiedemann B. Tn2440, a composite tetracycline resistance transposon with direct repeated copies of IS160 at its flanks. *J Gen Microbiol* 1985;131(9):2443–2447. PMID: 2999303
20. Colonna B, Bernardini M, Micheli G, Maimone F, Nicoletti M, Casalino M. The *Salmonella wien* virulence plasmid pZM3 carries Tn1935, a multiresistance transposon containing a composite IS1936-kanamycin resistance element. *Plasmid.* 1988;20(3):221–231. PMID: 2854280
21. Barg NL, Register S, Thomson C, Amyes S. Sequence identity with type VIII and association with IS176 of type IIc dihydrofolate reductase from *Shigella sonnei*. *Antimicrob Agents Chemother.* 1995; 39(1):112–116. PMID: PMC162495.
22. Hall RM. pKM101 is an IS46-promoted deletion of R46. *Nucleic Acids Res.* 1987; 15(13):5479. PMID: PMC305975.
23. Harmer CJ, Pong CH, Hall RM. Structures bounded by directly-oriented members of the IS26 family are pseudo-compound transposons. *Plasmid.* 2020;111:102530. PMID: 32871211
24. Drozdetskiy A, Cole C, Procter J, Barton GJ. JPred4: a protein secondary structure prediction server. *Nucleic Acids Res.* 2015;43(W1):W389–W394. PMID: PMC4489285.
25. Crooks GE, Hon G, Chandonia JM, Brenner SE. WebLogo: a sequence logo generator. *Genome Res.* 2004 ; 14(6):1188–1190. PMID: PMC419797.
26. Correia FF, Inouye S, Inouye M. A family of small repeated elements with some transposon-like properties in the genome of *Neisseria gonorrhoeae*. *J Biol Chem* 1988;263(25):12194–12198. PMID: 2842323
27. Miriagou V, Carattoli A, Tzelepi E, Villa L, Tzouveleki LS. IS26-associated In4-type integrons forming multiresistance loci in enterobacterial plasmids. *Antimicrob Agents Chemother.* 2005; 49(8):3541–3543. PMID: PMC1196216.
28. Partridge SR, Zong Z, Iredell JR. Recombination in IS26 and Tn2 in the evolution of multiresistance regions carrying bla_{CTX-M-15} on conjugative IncF plasmids from *Escherichia coli*. *Antimicrob Agents Chemother.* 2011; 55(11):4971–4978. PMID: PMC3195058.
29. Zhu Y-G, Johnson TA, Su J-Q, Qiao M, Guo G-X, Stedtfeld RD, Hashsham SA, Tiedje JM. Diverse and abundant antibiotic resistance genes in Chinese swine farms. *Proc Natl Acad Sci USA.* 2013; 110(9):3435–3440. PMID: PMC3587239.
30. Mollet B, Clerget M, Meyer J, Iida S. Organization of the Tn6-related kanamycin resistance transposon Tn2680 carrying two copies of IS26 and an IS903 variant, IS903. B. *J Bacteriol.* 1985; 163(1):55–60. PMID: PMC219079.
31. Lee KY, Hopkins JD, Syvanen M. Direct involvement of IS26 in an antibiotic resistance operon. *J Bacteriol.* 1990; 172(6):3229–3236. PMID: PMC209129.
32. Barberis-Maino L, Berger-Bachi B, Weber H, Beck WD, Kayser FH. IS431, a staphylococcal insertion sequence-like element related to IS26 from *Proteus vulgaris*. *Gene.* 1987;59:107–113. PMID: 2830163.
33. Martin C, Gomez-Lus R, Ortiz JM, Garcia-Lobo JM. Structure and mobilization of an ampicillin and gentamicin resistance determinant. *Antimicrob Agents Chemother.* 1987; 31(8):1266–1270. PMID: PMC174916.
34. Wrighton CJ, Strike P. A pathway for the evolution of the plasmid NTP16 involving the novel kanamycin resistance transposon Tn4352. *Plasmid.* 1987; 17(1):37–45. PMID: 3033719
35. Delecluse A, Bourgouin C, Klier A, Rapoport G. Nucleotide sequence and characterization of a new insertion element, IS240, from *Bacillus thuringiensis israelensis*. *Plasmid.* 1989;21(1):71–78. PMID: 2543009
36. Sundstrom L, Jansson C, Bremer K, Heikkila E, Olsson-Liljequist B, Skold O. A new dhfrVIII trimethoprim-resistance gene, flanked by IS26, whose product is remote from other dihydrofolate reductases in parsimony analysis. *Gene.* 1995;154:7–14. PMID: 7867952.
37. Doublet B, Praud K, Weill F-X, Cloeckert A. Association of IS26-composite transposons and complex In4-type integrons generates novel multidrug resistance loci in *Salmonella* genomic island 1. *J Antimicrob Chemother* 2009;63(2):282–289. PMID: 19074421
38. Bailey JK, Pinyon JL, Anantham S, Hall RM. Distribution of the bla_{TEM} gene and bla_{TEM}-containing transposons in commensal *Escherichia coli*. *J Antimicrob Chemother* 2011;66(4):745–751. PMID: 21393132
39. Lambert T, Gerbaud G, Courvalin P. Characterization of transposon Tn1528, which confers amikacin resistance by synthesis of aminoglycoside 3'-O-phosphotransferase type VI. *Antimicrob Agents Chemother.* 1994; 38(4):702–706. PMID: PMC284528.
40. Harmer CJ, Hall RM. An analysis of the IS6/IS26 family of insertion sequences: is it a single family? *Microb Genom.* 2019;5(9). PMID: PMC6807381.
41. Filée J, Siguier P, Chandler M. Insertion sequence diversity in archaea. *Microbiol Mol Biol Rev.* 2007; 71(1):121–157. PMID: PMC1847376.
42. Pong CH, Harmer CJ, Ataide SF, Hall RM. An IS26 variant with enhanced activity. *FEMS Microbiol Lett* 2019 Feb;366(3). PMID: 30753435
43. Trieu-Cuot P, Courvalin P. Transposition behavior of IS15 and its progenitor IS15-Δ: are cointegrates exclusive end products? *Plasmid.* 1985;14(1):80–9
44. Robinson DG, Lee M-C, Marx CJ. OASIS: an automated program for global investigation of bacterial and archaeal insertion sequences. *Nucleic Acids Res.* 2012;40(22):e174. PMID: PMC3526298.
45. Xie Z, Tang H. ISEScan: automated identification of insertion sequence elements in prokaryotic genomes. *Bioinformatics.* 2017;33(21):3340–3347. PMID: 29077810
46. Biswas A, Gauthier DT, Ranjan D, Zubair M. ISQuest: finding insertion sequences in prokaryotic sequence fragment data. *Bioinformatics.* 2015; 31(21):3406–3412. PMID: 26116929
47. Martin C, Timm J, Rauzier J, Gomez-Lus R, Davies J, Gicquel B. Transposition of an antibiotic resistance element in mycobacteria. *Nature.* 1990;345(6277): 739–743. PMID: 2163027
48. Kato K, Ohtsuki K, Mitsuda H, Yomo T, Negoro S, Urabe I. Insertion sequence IS6100 on plasmid pOAD2, which degrades nylon oligomers. *J Bacteriol.* 1994;176(4):1197–1200. PMID: PMC205175.
49. Hall RM, Brown HJ, Brookes DE, Stokes HW. Integrons found in different locations have identical 5' ends but variable 3' ends. *J Bacteriol.* 1994; 176(20):6286–6294. PMID: PMC196970.
50. Partridge SR, Brown HJ, Stokes HW, Hall RM. Transposons Tn1696 and Tn21 and their integrons In4 and In2 have independent origins. *Antimicrob Agents Chemother.* 2001;45(4):1263–1270. PMID: PMC90453.
51. Bissonnette L, Champetier S, Buisson J-P, Roy P. Characterization of the Nonenzymatic Chloramphenicol Resistance (cmIA) Gene of the In4 Integron of Tn1696: Similarity of the Product. *J Bacteriol.* 1991; 173:4493–4502. PMID: 1648560.
52. Sundin GW, Bender CL. Expression of the strA-strB streptomycin resistance genes in *Pseudomonas syringae* and *Xanthomonas campestris* and characterization of IS6100 in *X. campestris*. *Appl Environ Microbiol.* 1995; 61(8):2891–2897. PMID: PMC167566.
53. Boyd DA, Peters GA, Ng L, Mulvey MR. Partial characterization of a genomic island associated with the multidrug resistance region of *Salmonella enterica* Typhimurium DT104. *FEMS Microbiol Lett* 2000;189(2):285–291. PMID: 10930753
54. Preston KE, Hitchcock SA, Aziz AY, Tine JA. The complete nucleotide sequence of the multi-drug resistance-encoding IncL/M plasmid pACM1. *Plasmid.* 2014;76:54–65. PMID: 25291385
55. Leelaporn A, Firth N, Byrne ME, Roper E, Skurray RA. Possible role of insertion sequence IS257 in dissemination and expression of high- and low-level trimethoprim resistance in staphylococci. *Antimicrob Agents Chemother.* 1994; 38(10):2238–2244. PMID: PMC284724.
56. Simpson AE, Skurray RA, Firth N. An IS257-derived hybrid promoter directs transcription of a tetA(K) tetracycline resistance gene in the *Staphylococcus aureus* chromosomal mec region. *J Bacteriol.* 2000 ;182(12):3345–3352. PMID: PMC101884.
57. Al-Hassan L, Opazo A, Lopes BS, Mahallawy HE, Amyes SGB. Variations in IS6 promoters alter the expression of carbapenem resistance in related strains of *Acinetobacter baumannii*. *J Glob Antimicrob Resist* 2015;3(1):5–8. PMID: 27873653
58. Chen T-L, Wu RC-C, Shaio M-F, Fung C-P, Cho W-L. Acquisition of a plasmid-borne bla_{OXA-58} gene with an upstream IS1008 insertion conferring a high level of carbapenem resistance to *Acinetobacter baumannii*. *Antimicrob Agents Chemother.* 2008; 52(7):2573–2580. PMID: PMC2443897.
59. Allmansberger R, Brau B, Piepersberg W. Genes for gentamicin(3)-N-acetyltransferases III and IV. II. Nucleotide sequences of three AAC (3)-III genes and evolutionary aspects. *MolGenGenet.* 1985;198:514–520. PMID: 3892230.
60. Rouch D, Skurray R. IS257 from *Staphylococcus aureus* member of an insertion sequence superfamily Gram-positive and Gram-negative bacteria. *Gene.* 1989;76:195–205. 2546857.

61. Rouch DA, Messerotti LJ, Loo SL, Jackson CA, Skurray RA. Trimethoprim resistance transposon Tn4003 from *Staphylococcus aureus* encodes genes for a dihydrofolate reductase and thymidylate synthetase flanked by three copies of IS257. *Mol Microbiol*. 1989;3:161–75.
62. Stewart PR, Dubin DT, Chikramane SG, Inglis B, Matthews PR, Poston SM. IS257 and small plasmid insertions in the *mec* region of the chromosome of *Staphylococcus aureus*. *Plasmid*. 1994;31:12–20. PMID: 8171122.
63. DeShazer D, Wood GE, Friedman RL. Molecular characterization of catalase from *Bordetella pertussis*: identification of the *katA* promoter in an upstream insertion sequence. *Mol Microbiol* 1994;14(1):123–130. PMID: 7830550
64. Kim EH, Aoki T. The transposon-like structure of IS26-tetracycline, and kanamycin resistance determinant derived from transferable R plasmid of fish pathogen, *Pasteurella piscicida*. *Microbiol Immunol* 1994;38(1):31–38. PMID: 8052160
65. Naas T, Philippon L, Poirel L, Ronco E, Nordmann P. An SHV-derived extended-spectrum beta-lactamase in *Pseudomonas aeruginosa*. *Antimicrob Agents Chemother*. 1999; 43(5):1281–1284. PMID: PMC89260.
66. Thierry D, Brisson-Noël A, Vincent-Lévy-Frébault V, Nguyen S, Guesdon JL, Gicquel B. Characterization of a *Mycobacterium tuberculosis* insertion sequence, IS6110, and its application in diagnosis. *J Clin Microbiol*. 1990; 28(12):2668–2673. PMID: PMC268253.
67. Thierry D, Cave MD, Eisenach KD, Crawford JT, Bates JH, Gicquel B, Guesdon JL. IS6110, an IS-like element of *Mycobacterium tuberculosis* complex. *Nucleic Acids Res*. 1990; 18(1):188. PMID: PMC330226.
68. Thierry D, Matsiota-Bernard P, Pitsouni E, Costopoulos C, Guesdon JL. Use of the insertion element IS6110 for DNA fingerprinting of *Mycobacterium tuberculosis* isolates presenting various profiles of drug susceptibility. *FEMS Immunol Med Microbiol* 1993;6(4):287–297. PMID: 8098974
69. Byrne ME, Gillespie MT, Skurray RA. Molecular analysis of a gentamicin resistance transposonlike element on plasmids isolated from North American *Staphylococcus aureus* strains. *Antimicrob Agents Chemother*. 1990; 34(11):2106–2113. PMID: PMC172007.
70. Cain AK, Hall RM. Transposon Tn5393E carrying the *aphA1*-containing transposon Tn6023 upstream of *strAB* does not confer resistance to streptomycin. *Microb Drug Resist* 2011;17(3):389–394. PMID: 21702681
71. Bertini A, Poirel L, Bernabeu S, Fortini D, Villa L, Nordmann P, Carattoli A. Multicopy *blaOXA-58* gene as a source of high-level resistance to carbapenems in *Acinetobacter baumannii*. *Antimicrob Agents Chemother*. 2007; 51(7):2324–2328. PMID: PMC1913244.
72. Zienkiewicz M, Kern-Zdanowicz I, Carattoli A, Gniadkowski M, Ceglowski P. Tandem multiplication of the IS26-flanked amplicon with the *Bla* (SHV-5) gene within plasmid p1658/97. *FEMS Microbiol Lett* 2013;341(1):27–36. PMID: 23330672
73. Loli A, Tzouvelelis LS, Tzelepi E, Carattoli A, Vatopoulos AC, Tassios PT, Miriagou V. Sources of diversity of carbapenem resistance levels in *Klebsiella pneumoniae* carrying *blaVIM-1*. *J Antimicrob Chemother* 2006;58(3):669–672. PMID: 16870645
74. Nigro SJ, Farrugia DN, Paulsen IT, Hall RM. A novel family of genomic resistance islands, AbGR12, contributing to aminoglycoside resistance in *Acinetobacter baumannii* isolates belonging to global clone 2. *J Antimicrob Chemother*. 2013;68(3):554–7. PMID: 23169892.
75. Cullik A, Pfeifer Y, Prager R, von Baum H, Witte W. A novel IS26 structure surrounds *blaCTX-M* genes in different plasmids from German clinical *Escherichia coli* isolates. *J Med Microbiol* 2010;59(Pt 5):580–587. PMID: 20093380
76. He S, Hickman AB, Varani AM, Siguier P, Chandler M, Dekker JP, Dyda F. Insertion Sequence IS26 Reorganizes Plasmids in Clinically Isolated Multidrug-Resistant Bacteria by Replicative Transposition. *MBio*. 2015; 6(3): e00762. PMID: PMC4471558.
77. Oliva M, Monno R, Addabbo P, Pesole G, Scarscia M, Calia C, Dionisi AM, Chiara M, Horner DS, Manzari C, Pazzani C. IS26 mediated antimicrobial resistance gene shuffling from the chromosome to a mosaic conjugative FII plasmid. *Plasmid*. 2018;100:22–30. PMID: 30336162
78. Faccione D, Martino F, Albornoz E, Gomez S, Corso A, Petroni A. Plasmid carrying *mcr-9* from an extensively drug-resistant NDM-1-producing *Klebsiella quasipneumoniae* subsp. *quasipneumoniae* clinical isolate. *Infect Genet Evol* 2020;81:104273. PMID: 32145334
79. Post V, Hall RM. *AbaR5*, a large multiple-antibiotic resistance region found in *Acinetobacter baumannii*. *Antimicrob Agents Chemother*. 2009; 53(6):2667–2671. PMID: PMC2687260.
80. Hua X, Zhang L, Moran RA, Xu Q, Sun L, van Schaik W, Yu Y. Cointegration as a mechanism for the evolution of a KPC-producing multidrug resistance plasmid in *Proteus mirabilis*. *Emerg Microbes Infect*. 2020; 9(1):1206–1218. PMID: PMC7448864.
81. Szczepanowski R, Braun S, Riedel V, Schneider S, Krahn I, Pühler A, Schlüter A. The 120 592 bp IncF plasmid pRSB107 isolated from a sewage-treatment plant encodes nine different antibiotic-resistance determinants, two iron-acquisition systems and other putative virulence-associated functions. *Microbiology (Reading, Engl)*. 2005; 151(Pt 4):1095–1111. PMID: 15817778
82. Labigne-Roussel A, Briaux-Gerbaud S, Courvalin P. Tn1525, a kanamycin R determinant flanked by two direct copies of IS15. *Mol Gen Genet* 1983; 189(1):90–101. PMID: 6304464
83. McGann P, Courvalin P, Snesrud E, Clifford RJ, Yoon E-J, Onmus-Leone F, Ong AC, Kwak Yi, Grillot-Courvalin C, Lesho E, Waterman PE. Amplification of aminoglycoside resistance gene *aphA1* in *Acinetobacter baumannii* results in tobramycin therapy failure. *MBio*. 2014; 5(2):e00915. PMID: PMC3994513.
84. Shropshire WC, Aitken SL, Pifer R, Kim J, Bhatti MM, Li X, Kalia A, Galloway-Peña J, Sahasrabhojane P, Arias CA, Greenberg DE, Hanson BM, Shelburne SA. IS26-mediated amplification of *blaOXA-1* and *blaCTX-M-15* with concurrent outer membrane porin disruption associated with *de novo* carbapenem resistance in a recurrent bacteraemia cohort. *J Antimicrob Chemother*. 2020;76(2):385–95.
85. Chandler M, Silver L, Lane D, Caro L. Properties of an autonomous *r*-determinant from R100.1. *Cold Spring Harb Symp Quant Biol*. 1979;43 Pt 2: 1223–1231. PMID: 385225
86. Peterson BC, Rownd RH. Recombination sites in plasmid drug resistance gene amplification. *J Bacteriol*. 1985; 164(3):1359–1361. PMID: PMC219339.
87. Peterson BC, Rownd RH. Homologous sequences other than insertion elements can serve as recombination sites in plasmid drug resistance gene amplification. *J Bacteriol*. 1983; 156(1):177–185. PMID: PMC215067.
88. Rownd R, Mickel S. Dissociation and reassociation of RTF and *r*-determinants of the R-factor NR1 in *Proteus mirabilis*. *Nat New Biol* 1971;234(45):40–43. PMID: 4942895
89. Watanabe T, Ogata Y. Genetic stability of various resistance factors in *Escherichia coli* and *Salmonella typhimurium*. *J Bacteriol*. 1970; 102(2):363–368. PMID: PMC247559.
90. Silver L, Chandler M, Lane HE, Caro L. Production of extrachromosomal *r*-determinant circles from integrated R100.1: involvement of the *E. coli* recombination system. *Mol Gen Genet* 1980;179(3):565–571. PMID: 7003302
91. Meyer J, Iida S. Amplification of chloramphenicol resistance transposons carried by phage P1Cm in *Escherichia coli*. *Mol Gen Genet* 1979;176(2):209–219. PMID: 231182
92. Chandler M, de la Tour EB, Willems D, Caro L. Some properties of the chloramphenicol resistance transposon Tn9. *Mol Gen Genet* 1979;176(2): 221–231. PMID: 393954
93. Hubbard ATM, Mason J, Roberts P, Parry CM, Corless C, van Aartsen J, Howard A, Bulgasim I, Fraser AJ, Adams ER, Roberts AP, Edwards T. Piperacillin/tazobactam resistance in a clinical isolate of *Escherichia coli* due to IS26-mediated amplification of *blaTEM-1B*. *Nat Commun*. 2020;11(1):4915. PMID: PMC7530762.
94. Garza-Ramos U, Davila G, Gonzalez V, Alpuche-Aranda C, López-Collada VR, Alcantar-Curiel D, Newton O, Silva-Sanchez J. The *blaSHV-5* gene is encoded in a compound transposon duplicated in tandem in *Enterobacter cloacae*. *Clin Microbiol Infect* 2009;15(9):878–880. PMID: 19519856
95. Chavda KD, Chen L, Jacobs MR, Rojzman AD, Bonomo RA, Kreiswirth BN. Complete sequence of a *bla* (KPC)-harboring cointegrate plasmid isolated from *Escherichia coli*. *Antimicrob Agents Chemother*. 2015; 59(5):2956–2959. PMID: PMC4394832.
96. Chen L, Chavda KD, Mediavilla JR, Jacobs MR, Levi MH, Bonomo RA, Kreiswirth BN. Partial excision of *blaKPC* from Tn4401 in carbapenem-resistant *Klebsiella pneumoniae*. *Antimicrob Agents Chemother*. 2012; 56(3): 1635–1638. PMID: PMC3294926.
97. Wasyl D, Kern-Zdanowicz I, Domańska-Blicharz K, Zając M, Hosiowski A. High-level fluoroquinolone resistant *Salmonella enterica* serovar Kentucky ST198 epidemic clone with IncA/C conjugative plasmid carrying *Bla* (CTX-M-25) gene. *Vet Microbiol* 2015;175(1):85–91. PMID: 25465657
98. He S, Chandler M, Varani AM, Hickman AB, Dekker JP, Dyda F. Mechanisms of Evolution in High-Consequence Drug Resistance Plasmids. *MBio*. 2016; 7(6). PMID: PMC5142620.
99. Smith B, Dyson P. Inducible transposition in *Streptomyces lividans* of insertion sequence IS6100 from *Mycobacterium fortuitum*. *Mol Microbiol* 1995;18(5):933–941. PMID: 8825097

100. Nagy Z, Chandler M. Regulation of transposition in bacteria. *Res Microbiol* 2004;155(5):387–398. PMID: 15207871
101. Polzin KM, Shimizu-Kadota M. Identification of a new insertion element, similar to gram-negative IS26, on the lactose plasmid of *Streptococcus lactis* ML3. *J Bacteriol*. 1987; 169(12):5481–5488. PMID: PMC213975.
102. Turlan C, Chandler M. IS1-mediated intramolecular rearrangements: formation of excised transposon circles and replicative deletions. *EMBO J*. 1995; 14(21):5410–5421. PMID: PMC394650.
103. Weinert TA, Derbyshire KM, Hughson FM, Grindley ND. Replicative and conservative transpositional recombination of insertion sequences. *Cold Spring Harb Symp Quant Biol* 1984;49:251–260. PMID: 6099240
104. Tavakoli NP, Derbyshire KM. Tipping the balance between replicative and simple transposition. *EMBO J*. 2001; 20(11):2923–2930. PMID: PMC125483.
105. Harmer CJ, Hall RM. IS26-Mediated Formation of Transposons Carrying Antibiotic Resistance Genes. *mSphere*. 2016; 1(2). PMID: PMC4894685.
106. Harmer CJ, Hall RM. IS26-Mediated Precise Excision of the IS26-aphA1a Translocatable Unit. *MBio*. 2015;6:e01866–e01815. PMID: PMC4676283.
107. Harmer CJ, Moran RA, Hall RM. Movement of IS26-associated antibiotic resistance genes occurs via a translocatable unit that includes a single IS26 and preferentially inserts adjacent to another IS26. *MBio*. 2014;5:e01801–e01814. PMID: PMC4196232.
108. Shapiro JA. Molecular model for the transposition and replication of bacteriophage Mu and other transposable elements. *Proc Natl Acad Sci USA*. 1979;76(4):1933–1937. PMID: PMC383507.
109. Liebermann D, Hoffman-Liebermann B, Troutt AB, Kedes L, Cohen SN. Sequences from sea urchin TU transposons are conserved among multiple Eucaryotic species, Including Humans. *Mol Cell Biol*. 1986;6:218–26.
110. Chandler M, Fayet O, Rousseau P, Ton Hoang B, Duval-Valentin G. Copy-out-Paste-in Transposition of IS911: A Major Transposition Pathway. *Microbiol Spectr*. 2015;3(4). PMID: 26350305
111. Berger B, Haas D. Transposase and cointegrase: specialized transposition proteins of the bacterial insertion sequence IS21 and related elements. *Cell Mol Life Sci* 2001;58(3):403–419. PMID: 11315188
112. Kiss J, Olasz F. Formation and transposition of the covalently closed IS30 circle: the relation between tandem dimers and monomeric circles. *Mol Microbiol* 1999;34(1):37–52. PMID: 10540284
113. Loessner I, Dietrich K, Dittrich D, Hacker J, Ziebuhr W. Transposase-dependent formation of circular IS256 derivatives in *Staphylococcus epidermidis* and *Staphylococcus aureus*. *J Bacteriol*. 2002; 184(17):4709–4714. PMID: PMC135277.
114. Prudhomme M, Turlan C, Claverys JP, Chandler M. Diversity of Tn4001 transposition products: the flanking IS256 elements can form tandem dimers and IS circles. *J Bacteriol*. 2002; 184(2):433–443. PMID: PMC139565.
115. Kallastu A, Hörak R, Kivisaar M. Identification and characterization of IS1411, a new insertion sequence which causes transcriptional activation of the phenol degradation genes in *Pseudomonas putida*. *J Bacteriol*. 1998 ;180(20):5306–5312. PMID: PMC107577.
116. Partridge SR, Hall RM. In34, a complex In5 family class 1 integron containing orf513 and dfrA10. *Antimicrob Agents Chemother*. 2003; 47(1):342–349. PMID: PMC149023.
117. Chandler M, Séchaud J, Caro L. A mutant of the plasmid R100.1 capable of producing autonomous circular forms of its resistance determinant. *Plasmid*. 1982;7(3):251–262. PMID: 6285398
118. Harmer CJ, Hall RM. IS26 Family Members IS257 and IS1216 Also Form Cointegrates by Copy-In and Targeted Conservative Routes. *mSphere*. 2020; 5(1). PMID: PMC6952201.
119. Loot C, Turlan C, Chandler M. Host processing of branched DNA intermediates is involved in targeted transposition of IS911. *Mol Microbiol* 2004;51(2):385–393. PMID: 14756780
120. Olasz F, Stalder R, Arber W. Formation of the tandem repeat (IS30)2 and its role in IS30-mediated transpositional DNA rearrangements. *Mol Gen Genet* 1993;239(1–2):177–187. PMID: 8389976
121. Turlan C, Loot C, Chandler M. IS911 partial transposition products and their processing by the *Escherichia coli* RecG helicase. *Mol Microbiol* 2004;53(4): 1021–1033. PMID: 15306008
122. Harmer CJ, Hall RM. Targeted conservative cointegrate formation mediated by IS26 family members requires sequence identity at the reacting end. *mSphere*. 2021;6(1).
123. Kholodii G, Mindlin S, Gorlenko Z, Petrova M, Hobman J, Nikiforov V. Translocation of transposition-deficient (TndPKLH2-like) transposons in the natural environment: mechanistic insights from the study of adjacent DNA sequences. *Microbiology (Reading, Engl)*. 2004;150(Pt 4):979–92.
124. Loot C, Turlan C, Rousseau P, Ton-Hoang B, Chandler M. A target specificity switch in IS911 transposition: the role of the OrfA protein. *EMBO J*. 2002; 21(15):4172–82.
125. Rousseau P, Loot C, Turlan C, Nolivos S, Chandler M. Bias between the left and right inverted repeats during IS911 targeted insertion. *J Bacteriol*. 2008; 190(18):6111–8.
126. Bouvier M, Demarre G, Mazel D. Integron cassette insertion: a recombination process involving a folded single strand substrate. *EMBO J*. 2005; 24:4356–4367. PMID: PMC1356339.
127. Cambray G, Guerout A-M, Mazel D. Integrons. *Annu Rev Genet* 2010;44:141–166. PMID: 20707672
128. Escudero JA, Loot C, Nivina A, Mazel D. The integron: adaptation on demand. *Microbiol Spectr*. 2015;3(2):MDNA3–M0019. PMID: 26104695
129. Sievers F, Higgins DG. Clustal omega, accurate alignment of very large numbers of sequences. *Methods Mol Biol* 2014;1079:105–116. PMID: 24170397

Publisher's Note

Springer Nature remains neutral with regard to jurisdictional claims in published maps and institutional affiliations.

Ready to submit your research? Choose BMC and benefit from:

- fast, convenient online submission
- thorough peer review by experienced researchers in your field
- rapid publication on acceptance
- support for research data, including large and complex data types
- gold Open Access which fosters wider collaboration and increased citations
- maximum visibility for your research: over 100M website views per year

At BMC, research is always in progress.

Learn more biomedcentral.com/submissions

